

HIGH EFFICIENCY, LOW PROFILE.

Currently serving in many active programs, the CS500 Series is proven to perform in extreme environments.

Featuring full Power Factor Correction in a rugged, compact chassis, the CS500 Series is designed to meet MIL-S-901 High Impact Shock, MIL-STD-810 Environmental Requirements, MIL-STD-1399 Input Requirements, MIL-STD-461 CE101, CE102 EMI Requirements. Factory Configurable.



SPECIFICATIONS:

AC INPUT:

95-260 VAC, 47-440Hz, single phase. Power factor corrected. Meets MIL-STD-1399, Section 300, type 1 requirements.

EFFICIENCY:

85% minimum.(88% typ, 28 VDC Model at 100% load)

LINE REGULATION:

±1% of nominal over the full range of line input voltage.

LOAD REGULATION:

±1% for change from no load to full load.

RIPPLE AND NOISE:

Peak-to-peak combined ripple and noise does not exceed 2% of nominal output measured with a 20 MHz bandwidth.

ELECTROMAGNETIC COMPATIBILITY:

MIL-STD-461 requirements: CE101, CE102

ISOLATION:

Input to output: 1500 VDC
Input to case: 1500 VDC
Output to case: 500 VDC

TEMPERATURE RANGE:

Storage: -50°C to +85°C.
Operating temperature: -40°C to +70°C baseplate with no power derating.

CIRCUIT PROTECTION:

Each unit is completely protected against a short circuit of any duration. The current is nominally set at 120% of full load. The output voltage automatically restores to normal when the short is removed.

INPUT PROTECTION:

Internal fuse; In-rush current limiting; Transient protection

OVER TEMPERATURE PROTECTION:

Output shut down if maximum case temperature limit is exceeded.

RELIABILITY:

MTBF 15,438 hours calculated per MIL-HDBK-217Fn.2/25C/Full Load Naval Sheltered Environment

WEIGHT: 4.4 to 5 lbs typical.

ENVIRONMENTAL CONDITIONS:

Shock test: MIL-S-901 requirements (light weight).

Vibration test: MIL-STD-167, type 1 requirements.

Humidity: Power supply operates without any evidence of degraded performance in non-condensing relative humidity up to 95% (Select "C" option for 100% condensing environment).

REMOTE SENSING:

Standard.

CONTROL FEATURES:

"INHIBIT"
(TTL LOW=TRUE).

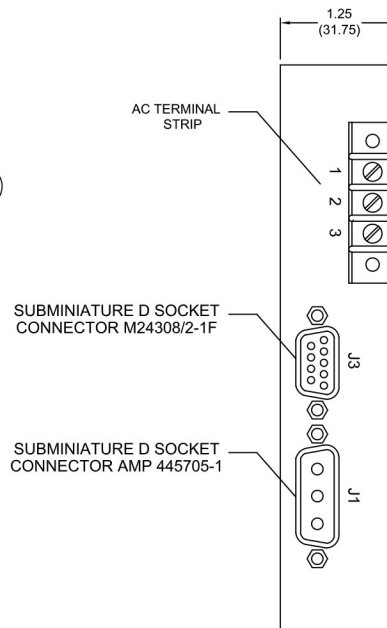
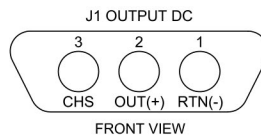
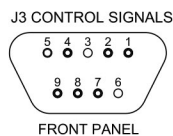
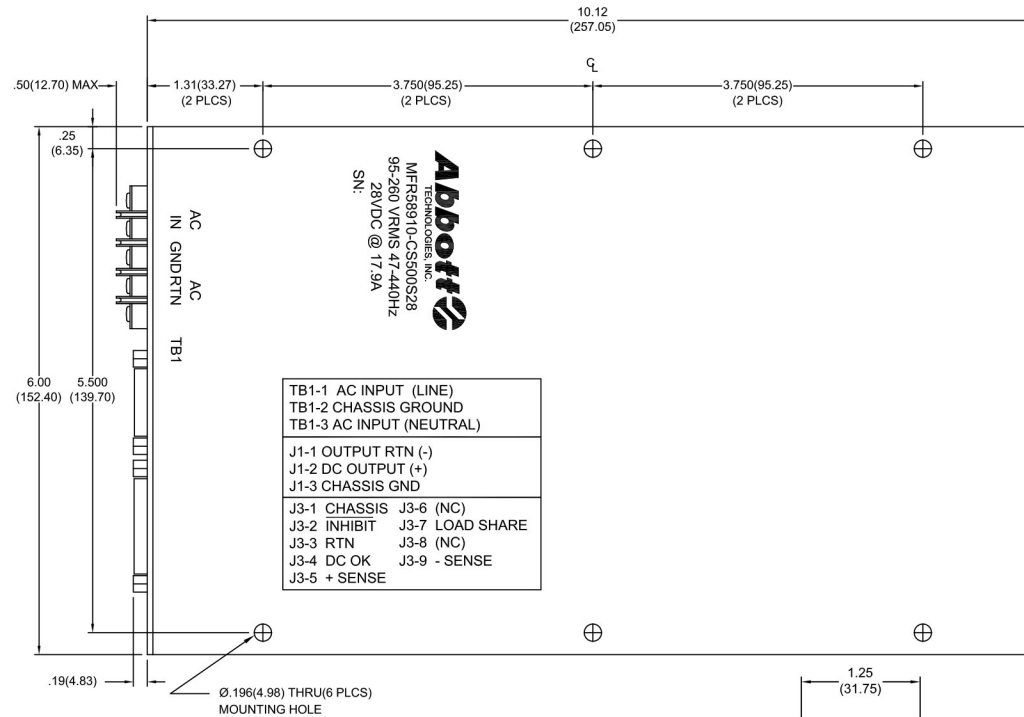
BUILT-IN TEST FEATURE:

OUTPUT FAULT ALARM
(TTL LOW=FAULT).

REV 20230323

*Specifications subject to change without notice

MECHANICAL DRAWING:



CS500S 28 H

OUTPUT VOLTAGE:
(SEE AVAILABLE OUTPUTS)

HARDWARE:
H = HEATSINK
HB = HEATSINK/BRAKET

Maximum Output Current Ratings

Output Voltage	Output Current
12V	35.0A*
13.6V	35.0A*
15V	33.3A
24V	20.8A
28V	17.9A
48V	10.4A

* Output power limited by connector current rating. Please contact factory for alternative connector information.