

400Hz Power Toroid Transformers

- Designed for 400Hz operation
- More VA per size and weight than conventional power transformers
- Military Designation No. TF5S03ZZ
- Industrial style also standard



Specifications

Input Primary:

115 VAC, 400Hz \pm 20 Hz, 1 phase.)

“A” Option: 230 VAC. Add suffix “A” to model number, e.g., TF10-1A.

“C” Option: Center tapped output. Add suffix “C” to model number, e.g., TF10-1C.

Regulation:

5% or less no load to full load.

*Superseded MIL-T-27.

Secondary Voltage Tolerance:

Within 5% when measured at full load and listed input.

Dielectric Withstanding Voltage:
1000 VAC.

Approximate Efficiency:
90% to 95% typical.

Operating Ambient Temperature:

Model TM: 90°C maximum.
Model TF: 80°C maximum.

Construction:

Model TM: To meet MIL-PRF-27F*, Grade 5, Class S.

Model TF: Open frame, Industrial Grade with Teflon leads 6” long.

Output Secondary:

See voltage and current of specific models listed.

Other outputs and/or inputs available upon request.

Dimensions

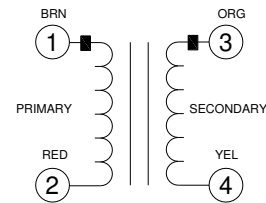
| Size/Style | A | B | Wt (Lb. MAX) | Insert |
|------------|------|------|--------------|--------|
| 1M | 1.62 | 0.95 | 0.26 | 6-32 |
| 1F | 1.50 | 0.95 | 0.17 | — |
| 2M | 1.75 | 1.00 | 0.33 | 8-32 |
| 2F | 1.63 | 1.00 | 0.25 | — |
| 3M | 2.13 | 1.10 | 0.52 | 8-32 |
| 3F | 2.00 | 1.10 | 0.38 | — |
| 4M | 2.13 | 1.30 | 0.66 | 10-32 |
| 4F | 2.00 | 1.30 | 0.52 | — |
| 5M | 2.38 | 1.60 | 1.10 | 10-32 |
| 5F | 2.25 | 1.60 | 0.79 | — |

Dimensional Tolerance: Model TM \pm .03; Model TF Dim A, B Maximum; Terminal spacing is 0.35.

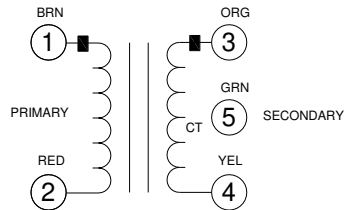
Note: QPL models come with “C” Option. Terminal marking located on top of unit.

Circuit Diagram

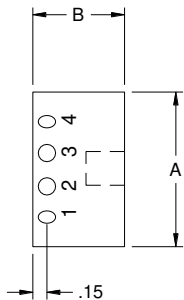
Standard and “A” Option



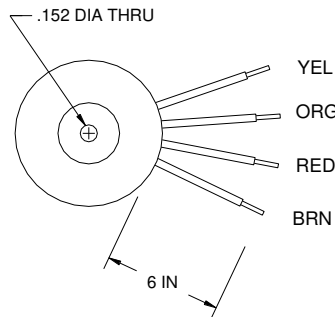
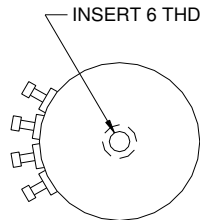
“C” Option



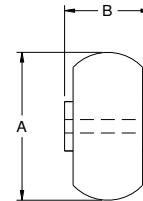
Mechanical Drawings



STYLE M



STYLE F



Call us toll-free **1-800-367-8200**

MAIN OFFICE:

8203 Vineland Avenue, Sun Valley, CA 91352 – 818-504-0644 – FAX: 818-768-0395

Visit our website at www.abbott-tech.com and online quote form at sales@abbott-tech.com.

400Hz Power Toroid Transformers

| Output Volts (FL) | Model No. Style M | Model No. Style F | QPL No. Style M | Output Current (Amps) | Size | VA |
|-------------------|-------------------|-------------------|-----------------|-----------------------|------|-----|
| 5V | TM1-1 | TF1-1 | M27350-01 | 3.00 | 1 | 15 |
| | TM1-2 | TF1-2 | M27351-01 | 5.00 | 2 | 25 |
| | TM1-3 | TF1-3 | M27352-01 | 10.00 | 3 | 50 |
| 7V | TM2-1 | TF2-1 | M27350-02 | 2.14 | 1 | 15 |
| | TM2-2 | TF2-2 | M27351-02 | 3.57 | 2 | 25 |
| | TM2-3 | TF2-3 | M27352-02 | 7.14 | 3 | 50 |
| | TM2-4 | TF2-4 | M27353-01 | 10.00 | 4 | 70 |
| 10V | TM3-1 | TF3-1 | M27350-03 | 1.50 | 1 | 15 |
| | TM3-2 | TF3-2 | M27351-03 | 2.50 | 2 | 25 |
| | TM3-3 | TF3-3 | M27352-03 | 5.00 | 3 | 50 |
| | TM3-4 | TF3-4 | M27353-02 | 7.50 | 4 | 75 |
| | TM3-5 | TF3-5 | M27354-01 | 10.00 | 5 | 100 |
| 12V | TM4-1 | TF4-1 | M27350-04 | 1.25 | 1 | 15 |
| | TM4-2 | TF4-2 | M27351-04 | 2.08 | 2 | 25 |
| | TM4-3 | TF4-3 | M27352-04 | 4.17 | 3 | 50 |
| | TM4-4 | TF4-4 | M27353-03 | 6.25 | 4 | 75 |
| | TM4-5 | TF4-5 | M27354-02 | 8.33 | 5 | 100 |
| 14V | TM5-1 | TF5-1 | M27350-05 | 1.07 | 1 | 15 |
| | TM5-2 | TF5-2 | M27351-05 | 1.79 | 2 | 25 |
| | TM5-3 | TF5-3 | M27352-05 | 3.57 | 3 | 50 |
| | TM5-4 | TF5-4 | M27353-04 | 5.36 | 4 | 75 |
| | TM5-5 | TF5-5 | M27354-03 | 7.14 | 5 | 100 |
| 17V | TM6-1 | TF6-1 | M27350-06 | 0.88 | 1 | 15 |
| | TM6-2 | TF6-2 | M27351-06 | 1.47 | 2 | 25 |
| | TM6-3 | TF6-3 | M27352-06 | 2.94 | 3 | 50 |
| | TM6-4 | TF6-4 | M27353-05 | 4.41 | 4 | 75 |
| | TM6-5 | TF6-5 | M27354-04 | 5.88 | 5 | 100 |
| 24V | TM7-1 | TF7-1 | M27350-07 | 0.63 | 1 | 15 |
| | TM7-2 | TF7-2 | M27351-07 | 1.04 | 2 | 25 |
| | TM7-3 | TF7-3 | M27352-07 | 2.08 | 3 | 50 |
| | TM7-4 | TF7-4 | M27353-08 | 3.13 | 4 | 75 |
| | TM7-5 | TF7-3 | M27354-01 | 4.17 | 5 | 100 |
| 26V | TM7.5-1 | TF7.5-1 | M27350-11 | 0.58 | 1 | 15 |
| | TM7.5-2 | TF7.5-2 | M27351-11 | 0.96 | 2 | 25 |
| | TM7.5-3 | TF7.5-3 | M27352-11 | 1.92 | 3 | 50 |
| | TM7.5-4 | TF7.5-4 | M27353-10 | 2.88 | 4 | 75 |
| | TM7.5-5 | TF7.5-5 | M27354-09 | 3.85 | 5 | 100 |
| 28V | TM8-1 | TF8-1 | M27350-08 | 0.54 | 1 | 15 |
| | TM8-2 | TF8-2 | M27351-08 | 0.89 | 2 | 25 |
| | TM8-3 | TF8-3 | M27352-08 | 1.79 | 3 | 50 |
| | TM8-4 | TF8-4 | M27353-07 | 2.68 | 4 | 75 |
| | TM8-5 | TF8-5 | M27354-06 | 3.57 | 5 | 100 |
| 34V | TM9-1 | TF9-1 | M27350-09 | 0.44 | 1 | 15 |
| | TM9-2 | TF9-2 | M27351-09 | 0.74 | 2 | 25 |
| | TM9-3 | TF9-3 | M27352-09 | 1.47 | 3 | 50 |
| | TM9-4 | TF9-4 | M27353-08 | 2.21 | 4 | 75 |
| | TM9-5 | TF9-5 | M27354-07 | 2.94 | 5 | 100 |
| 115V | TM10-1 | TF10-1 | M27350-10 | 0.13 | 1 | 15 |
| | TM10-2 | TF10-2 | M27351-10 | 0.21 | 2 | 25 |
| | TM10-3 | TF10-3 | M27352-10 | 0.43 | 3 | 50 |
| | TM10-4 | TF10-4 | M27353-09 | 0.65 | 4 | 75 |
| | TM10-5 | TF10-5 | M27354-08 | 0.87 | 5 | 100 |



Call us toll-free **1-800-367-8200**

MAIN OFFICE:

8203 Vineland Avenue, Sun Valley, CA 91352 – 818-504-0644 – FAX: 818-768-0395

Visit our website at www.abbott-tech.com and online quote form at sales@abbott-tech.com.