

400 Hz Power Toroid Transformers

- Designed for 400 Hz operation
- More VA per size and weight than conventional power transformers
- Military Designation No. TF5S03ZZ
- Industrial style also standard



Specifications

Input Primary:

115 V ac, 400 Hz ± 20 Hz, 1 phase.

"A"Option: 230 V ac, Add suffix "A" to model number, e.g., TF10-1A.

"C"Option: Center tapped output. Add suffix "C" to model number, e.g., TF10-1C.

Regulation:

5% or less, no load to full load.

Secondary Voltage Tolerance:

Within 5% when measured at full load and listed input.

Dielectric Withstanding Voltage:

1000 V ac.

Approximate Efficiency:

90% to 95% typical.

Operating Ambient Temperature:

Model TM- 90°C maximum Model TF- 80°C maximum.

Construction:

Model TM - to meet MIL-PRF-27F*, Grade 5 Class S.

Model TF- Open frame, Industrial Grade with Teflon leads 6" long.

Output Secondary:

See voltage and current of specific models listed.

Other outputs and/or inputs available upon request.

* Superseded MIL-T-27

Output Volts (F.L.)	Model No. Style M	Model No. Style F	QPL No. (Style M Only)	Output Current (Amps)	Size	VA
5V	TM1-1	TF1-1	M27/350-01	3.00	1	15
	TM1-2	TF1-2	M27/351-01	5.00	2	25
	TM1-3	TF1-3	M27/352-01	10.00	3	50
7V	TM2-1	TF2-1	M27/350-02	2.14	1	15
	TM2-2	TF2-2	M27/351-02	3.57	2	25
	TM2-3	TF2-3	M27/352-02	7.14	3	50
	TM2-4	TF2-4	M27/353-01	10.00	4	70
10V	TM3-1	TF3-1	M27/350-03	1.50	1	15
	TM3-2	TF3-2	M27/351-03	2.50	2	25
	TM3-3	TF3-3	M27/352-03	5.00	3	50
	TM3-4	TF3-4	M27/353-02	7.50	4	75
	TM3-5	TF3-5	M27/354-01	10.00	5	100
12V	TM4-1	TF4-1	M27/350-04	1.25	1	15
	TM4-2	TF4-2	M27/351-04	2.08	2	25
	TM4-3	TF4-3	M27/352-04	4.17	3	50
	TM4-4	TF4-4	M27/353-03	6.25	4	75
	TM4-5	TF4-5	M27/354-02	8.33	5	100
14V	TM5-1	TF5-1	M27/350-05	1.07	1	15
	TM5-2	TF5-2	M27/351-05	1.79	2	25
	TM5-3	TF5-3	M27/352-05	3.57	3	50
	TM5-4	TF5-4	M27/353-04	5.36	4	75
	TM5-5	TF5-5	M27/354-03	7.14	5	100
17V	TM6-1	TF6-1	M27/350-06	0.88	1	15
	TM6-2	TF6-2	M27/351-06	1.47	2	25
	TM6-3	TF6-3	M27/352-06	2.94	3	50
	TM6-4	TF6-4	M27/353-05	4.41	4	75
	TM6-5	TF6-5	M27/354-04	5.88	5	100

Output Volts (F.L.)	Model No. Style M	Model No. Style F	QPL No. (Style M Only)	Output Current (Amps)	Size	VA
24V	TM7-1	TF7-1	M27/350-07	0.63	1	15
	TM7-2	TF7-2	M27/351-07	1.04	2	25
	TM7-3	TF7-3	M27/352-07	2.08	3	50
	TM7-4	TF7-4	M27/353-06	3.13	4	75
	TM7-5	TF7-5	M27/354-05	4.17	5	100
26V	TM7.5-1	TF7.5-1	M27/350-11	0.58	1	15
	TM7.5-2	TF7.5-2	M27/351-11	0.96	2	25
	TM7.5-3	TF7.5-3	M27/352-11	1.92	3	50
	TM7.5-4	TF7.5-4	M27/353-10	2.88	4	75
	TM7.5-5	TF7.5-5	M27/354-09	3.85	5	100
28V	TM8-1	TF8-1	M27/350-08	0.54	1	15
	TM8-2	TF8-2	M27/351-08	0.89	2	25
	TM8-3	TF8-3	M27/352-08	1.79	3	50
	TM8-4	TF8-4	M27/353-07	2.68	4	75
	TM8-5	TF8-5	M27/354-06	3.57	5	100
34V	TM9-1	TF9-1	M27/350-09	0.44	1	15
	TM9-2	TF9-2	M27/351-09	0.74	2	25
	TM9-3	TF9-3	M27/352-09	1.47	3	50
	TM9-4	TF9-4	M27/353-08	2.21	4	75
	TM9-5	TF9-5	M27/354-07	2.94	5	100
115V	TM10-1	TF10-1	M27/350-10	0.13	1	15
	TM10-2	TF10-2	M27/351-10	0.21	2	25
	TM10-3	TF10-3	M27/352-10	0.43	3	50
	TM10-4	TF10-4	M27/353-09	0.65	4	75
	TM10-5	TF10-5	M27/354-08	0.87	5	100

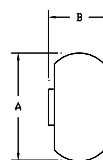
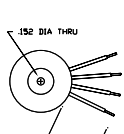
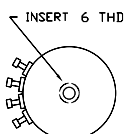
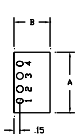
Dimensions

Size/Style	1M	1F	2M	2F	3M	3F	4M	4F	5M	5F
Dim A	1.62	1.50	1.75	1.63	2.13	2.00	2.13	2.00	2.38	2.25
Dim B	0.95	0.95	1.00	1.00	1.10	1.10	1.30	1.30	1.60	1.60
Wt(Lb max)	0.26	0.17	0.33	0.25	0.52	0.38	0.66	0.52	1.10	0.79
Insert	6-32	-	8-32	-	8-32	-	10-32	-	10-32	-

Dimensional Tolerance: Model TM ±.03; Model TF Dim A, B Maximum; Terminal Spacing is 0.35

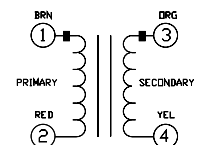
Note: QPL models automatically come with option "C". Terminal marking located on top of unit.

Mechanical Drawings

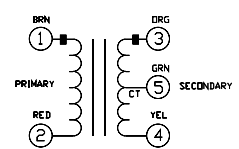


Circuit Diagram

Standard and A option



C option



8203 Vineland Avenue
Sun Valley, CA 91352
Tel. 818-504-0644
Fax. 818-768-0395