

400 Hz MIL-PRF-27F Toroid Transformers

- Military designation TF5S03ZZ
- Compact toroidal construction in a convenient printed-circuit mount package.
- Power levels 1. 5, 3, 6, and 9 VA
- Standard output voltages 5 to 300 volts
- Low outgassing molded construction for high-altitude operation.



Specifications

Input Primary:
115VAC, 400 Hz ± 20 Hz, 1 phase.

Regulation:
Ranges from 10% to 23% maximum.

Electrostatic Shield Option:
(1.5, 3, 6 VA only) add "X" suffix to part number (eg: 3R6CTBX).

Secondary Voltage Tolerances:
Within 3% of listed output voltage when measured at full load and 115VRMS input.

Dielectric Withstanding Voltage:
910VRMS (1624 VRMS—200 to 300 V outputs).

Efficiency:
Ranges from 70% to 83% minimum.

Operating Ambient Temperature:
95°C maximum.

Construction:
To MIL-PRF-27F* Grade 5, Class S

Environment:
Encapsulated to meet MIL-STD 810, including vibration, shock, sand, dust, humidity, saltspray, fungus, sunshine, rain, explosion and altitude (to a vacuum).

* Superseded MIL-T-27

Dimensions

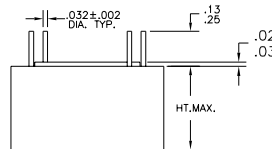
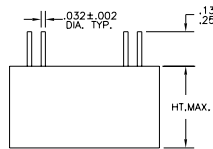
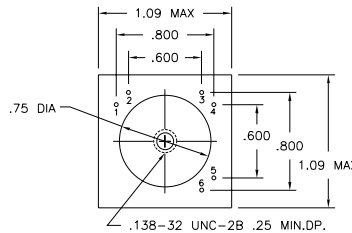
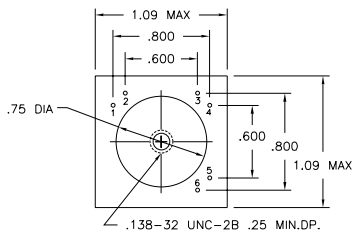
Standard (Without Shield)

"X" Option (With Shield)

VA	Case Height (Max)	Weight LBS (Max)
1.5	.47	.053
3.0	.59	.068
6.0	.78	.103
9.0	1.03	.137

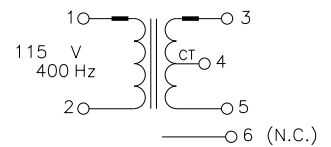
VA	Case Height (Max)	Weight LBS (Max)
1.5	.59	.068
3.0	.78	.103
6.0	1.03	.137
9.0	N/A	N/A

Mechanical Drawings

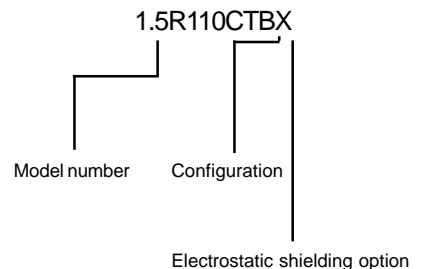
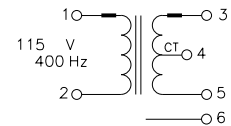


Circuit Diagram

Standard



X option (With Electrostatic Shield)



Order instructions

R Line Toroid Transformers can be ordered in A or B configuration, and with electrostatic shielding ("X" Option). Add "A" or "B" suffix to model number to select configuration. Add "X" suffix after A or B to order electrostatic shielding. (Not available as standard on 9 VA models). Follow this example



8203 Vineland Avenue
Sun Valley, CA 91352
Tel. 818-504-0644
Fax. 818-768-0395

400 Hz MIL-PRF-27F P.C. Toroid Transformers

Output Volts (F.L.)	Output Current (Amp)	V.A.	Model No.	Output Volts (F.L.)	Output Current (Amp)	V.A.	Model No.	Output Volts (F.L.)	Output Current (Amp)	V.A.	Model No.
5.0	.300	1.5	1.5R5CT	20.0	.075	1.5	1.5R20CT	75.0	.020	1.5	1.5R75CT
	.600	3.0	3R5CT		.150	3.0	3R20CT		.040	3.0	3R75CT
	1.20	6.0	6R5CT		.300	6.0	6R20CT		.080	6.0	6R75CT
	1.80	9.0	9R5CT		.450	9.0	9R20CT		.120	9.0	9R75CT
6.0	.250	1.5	1.5R6CT	22.0	.068	1.5	1.5R22CT	82.0	.018	1.5	1.5R82CT
	.500	3.0	3R6CT		.136	3.0	3R22CT		.036	3.0	3R82CT
	1.00	6.0	6R6CT		.272	6.0	6R22CT		.073	6.0	6R82CT
	1.50	9.0	9R6CT		.409	9.0	9R22CT		.109	9.0	9R82CT
6.3	.238	1.5	1.5R6.3CT	24.0	.062	1.5	1.5R24CT	91.0	.016	1.5	1.5R91CT
	.476	3.0	3R6.3CT		.125	3.0	3R24CT		.033	3.0	3R91CT
	.952	6.0	6R6.3CT		.250	6.0	6R24CT		.066	6.0	6R91CT
	1.43	9.0	9R6.3CT		.375	9.0	9R24CT		.099	9.0	9R91CT
7.0	.214	1.5	1.5R7CT	26.0	.057	1.5	1.5R26CT	100	.015	1.5	1.5R100CT
	.428	3.0	3R7CT		.115	3.0	3R26CT		.030	3.0	3R100CT
	.857	6.0	6R7CT		.230	6.0	6R26CT		.060	6.0	6R100CT
	1.28	9.0	9R7CT		.346	9.0	9R26CT		.090	9.0	9R100CT
7.5	.200	1.5	1.5R7.5CT	28.0	.053	1.5	1.5R28CT	110	.014	1.5	1.5R110CT
	.400	3.0	3R7.5CT		.107	3.0	3R28CT		.027	3.0	3R110CT
	.800	6.0	6R7.5CT		.214	6.0	6R28CT		.054	6.0	6R110CT
	1.20	9.0	9R7.5CT		.321	9.0	9R28CT		.082	9.0	9R110CT
8.0	.187	1.5	1.5R8CT	30.0	.050	1.5	1.5R30CT	115	.013	1.5	1.5R115CT
	.375	3.0	3R8CT		.100	3.0	3R30CT		.026	3.0	3R115CT
	.750	6.0	6R8CT		.200	6.0	6R30CT		.052	6.0	6R115CT
	1.12	9.0	9R8CT		.300	9.0	9R30CT		.078	9.0	9R115CT
9.0	.166	1.5	1.5R9CT	33.0	.045	1.5	1.5R33CT	120	.012	1.5	1.5R120CT
	.333	3.0	3R9CT		.091	3.0	3R33CT		.025	3.0	3R120CT
	.666	6.0	6R9CT		.182	6.0	6R33CT		.050	6.0	6R120CT
	1.00	9.0	9R9CT		.272	9.0	9R33CT		.075	9.0	9R120CT
10.0	.150	1.5	1.5R10CT	36.0	.041	1.5	1.5R36CT	130	.011	1.5	1.5R130CT
	.300	3.0	3R10CT		.083	3.0	3R36CT		.023	3.0	3R130CT
	.600	6.0	6R10CT		.166	6.0	6R36CT		.046	6.0	6R130CT
	.900	9.0	9R10CT		.250	9.0	9R36CT		.069	9.0	9R130CT
11.0	.136	1.5	1.5R11CT	39.0	.038	1.5	1.5R39CT	150	.010	1.5	1.5R150CT
	.272	3.0	3R11CT		.077	3.0	3R39CT		.020	3.0	3R150CT
	.545	6.0	6R11CT		.166	6.0	6R39CT		.040	6.0	6R150CT
	.818	9.0	9R11CT		.230	9.0	9R39CT		.060	9.0	9R150CT
12.0	.125	1.5	1.5R12CT	43.0	.035	1.5	1.5R43CT	180	.008	1.5	1.5R180CT
	.250	3.0	3R12CT		.069	3.0	3R43CT		.017	3.0	3R180CT
	.500	6.0	6R12CT		.139	6.0	6R43CT		.033	6.0	6R180CT
	.750	9.0	9R12CT		.209	9.0	9R43CT		.050	9.0	9R180CT
12.6	.119	1.5	1.5R12.6CT	47.0	.032	1.5	1.5R47CT	200	.007	1.5	1.5R200CT
	.238	3.0	3R12.6CT		.064	3.0	3R47CT		.015	3.0	3R200CT
	.476	6.0	6R12.6CT		.127	6.0	6R47CT		.030	6.0	6R200CT
	.714	9.0	9R12.6CT		.191	9.0	9R47CT		.045	9.0	9R200CT
13.0	.115	1.5	1.5R13CT	51.0	.029	1.5	1.5R51CT	220	.007	1.5	1.5R220CT
	.230	3.0	3R13CT		.059	3.0	3R51CT		.013	3.0	3R220CT
	.461	6.0	6R13CT		.117	6.0	6R51CT		.027	6.0	6R220CT
	.692	9.0	9R13CT		.176	9.0	9R51CT		.041	9.0	9R220CT
15.0	.100	1.5	1.5R15CT	56.0	.027	1.5	1.5R56CT	240	.006	1.5	1.5R240CT
	.200	3.0	3R15CT		.053	3.0	3R56CT		.012	3.0	3R240CT
	.400	6.0	6R15CT		.107	6.0	6R56CT		.025	6.0	6R240CT
	.600	9.0	9R15CT		.160	9.0	9R56CT		.037	9.0	9R240CT
16.0	.093	1.5	1.5R16CT	62.0	.024	1.5	1.5R62CT	270	.005	1.5	1.5R270CT
	.187	3.0	3R16CT		.048	3.0	3R62CT		.011	3.0	3R270CT
	.375	6.0	6R16CT		.096	6.0	6R62CT		.022	6.0	6R270CT
	.562	9.0	9R16CT		.145	9.0	9R62CT		.033	9.0	9R270CT
18.0	.083	1.5	1.5R18CT	68.0	.022	1.5	1.5R68CT	300	.005	1.5	1.5R300CT
	.166	3.0	3R18CT		.044	3.0	3R68CT		.010	3.0	3R300CT
	.333	6.0	6R18CT		.088	6.0	6R68CT		.020	6.0	6R300CT
	.500	9.0	9R18CT		.132	9.0	9R68CT		.030	9.0	9R300CT

Add "A" or "B" suffix to select A or B configuration
 Add "X" suffix as desired to indicate electrostatic shielding option
 (E.S. shielding not available as standard on 9 VA models) EG.1.5R110CTBX



8203 Vineland Avenue
 Sun Valley, CA 91352
 Tel. 818-504-0644
 Fax. 818-768-0395