

# DC to DC Converter for Aircraft or Ground Vehicle Applications

- RTCA DO-160C Qualified
- Wide Input Range
- Meets MIL-STD-704F
- Fully Encapsulated
- Shielded Metal Case

## Specifications

### DC Input:

28 VDC nominal. Meets MIL-STD-704F, continuous operation from 18 to 40 VDC.

### Efficiency:

74% minimum.

### Line Regulation:

±1% of nominal over the full range of line input voltage.

### Load Regulation:

±1% for change from no load to full load.

### Output Voltage:

5 VDC nominal

### Output Current:

1A (5 VDC) limited to 1.4A even when short circuited.

### Temperature Range:

Storage: -62°C to +85°C.

### Operating temperature:

-20°C to +70°C

### Isolation:

The input and output are isolated from the chassis.

### Insulation Resistance:

20 Megohms minimum between terminals and case when tested at 500VDC.

### Short Circuit Protection:

Each unit is completely protected against a short circuit of any duration. The constant current circuit is nominally set at 120% of full load to reduce voltage. The output voltage automatically restores to normal when the short is removed.

### Dielectric Withstanding Voltage:

1500 VAC RMS, 60Hz between terminals and the case, for 1 minute, without any leakage current in excess of 1mA or evidence of damage due to arcing or insulation breakdown.

### Reliability:

MTBF 109,434 hours calculated per MIL-HDBK-217F Notice 2 in ground mobile applications.

### Testing Qualifications:

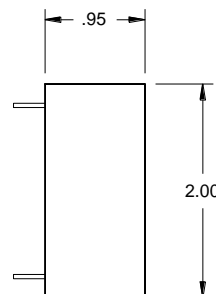
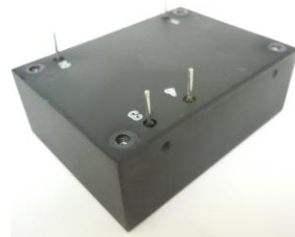
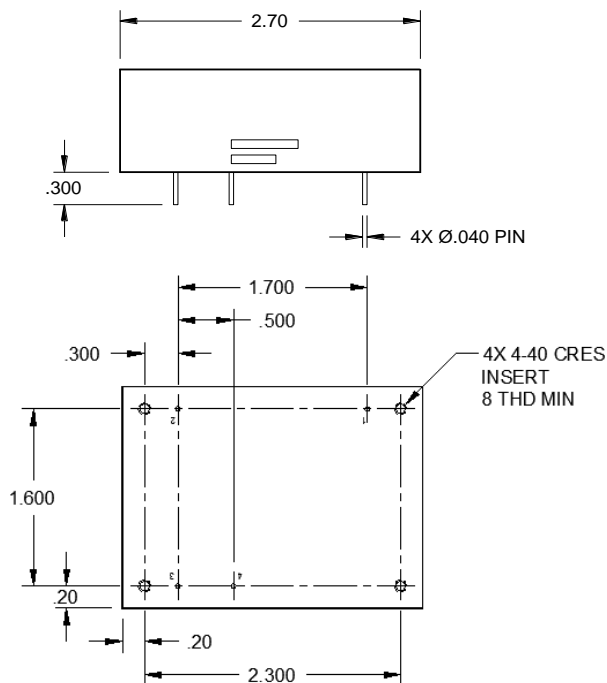
All units are qualified per RTCA DO-160C.

### Weight:

0.4 lbs.



## Mechanical Drawings



### PIN NO.

- 1 +INPUT (18-40 VDC)
- 2 INPUT RETURN
- 3 +OUTPUT (5 VDC, 0-1A)
- 4 OUTPUT RETURN



Call us toll-free **1-800-367-8200**

8203 Vineland Avenue, Sun Valley, CA 91352 – 818-504-0644 – FAX: 818-768-0395  
Visit our website at [www.abbott-tech.com](http://www.abbott-tech.com)

Email: [sales@abbott-tech.com](mailto:sales@abbott-tech.com).