

60 Hz Industrial Power Transformers

- High efficiency, excellent regulation and high isolation
- Widely used in custom power supplies and industrial power controls
- 10 VA to 1300 VA

Specifications

Input Primary:
115 V ac. 50-65 Hz; 1 Phase
(capable of 400 Hz operation).

"A" Option: 230 V ac. Add suffix "A" to model number, e.g., 6B5-10A.

"B" Option 115/230 V ac. Add suffix "B" to model number, e.g., 6B5-10B.

"X" Option: Electrostatic shield grounded to mounting bracket. Add suffix "X" to model number, e.g., 6B5-10X.

Regulation:
15% maximum from no load to full load (6% on units size 8 and larger).

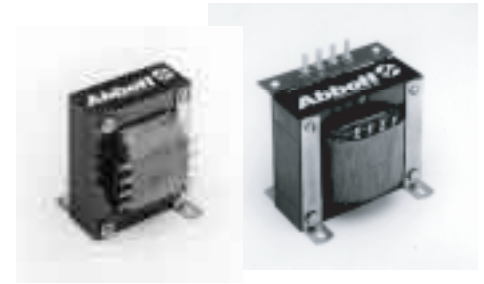
Secondary Voltage Tolerance
Within 5% of listed output voltage when measured at full load and listed input.

Dielectric Withstanding Voltage:
1500Vac.

Operating Ambient Temperature:
80° C maximum (70° C on units size 8 and larger).

Efficiency:
Ranges from 80% to 90% typical.

Construction:
Industrial grade using silicon iron for core and heavy insulated synthetic film magnet wire with Class "130" rating.



Impregnated with a high quality insulating varnish having a Class "200" rating.

Output Secondary:
See output voltage and current of specific models listed.

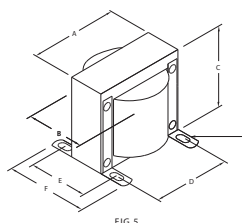
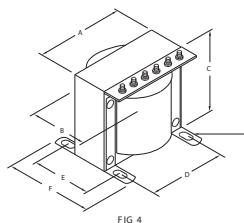
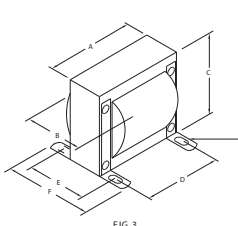
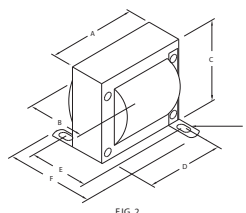
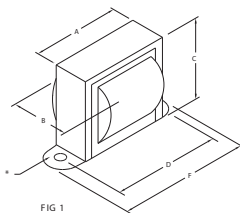
Other outputs and/or inputs available on request.

Dimensions

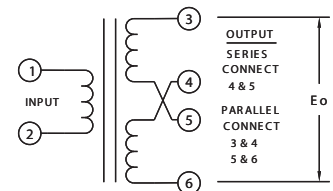
Size	A	B	C	D	E	F	Hole #	Fig
1	1.95	1.68	2.31	2.37	-	2.93	.18	1
2	2.26	1.93	2.68	2.81	-	3.18	.18	1
3	2.57	2.18	3.06	3.12	-	3.62	.18	1
4	2.81	2.43	3.37	2.25	2.12	2.76	.20 X .37	2
5	3.12	2.68	3.75	2.50	2.25	2.92	.20 X .37	2
6	3.44	2.93	4.12	2.75	2.37	3.04	.20 X .37	3
7	3.75	3.18	4.50	3.00	2.50	3.17	.20 X .37	3
7A	4.50	3.18	3.75	3.75	2.50	3.17	.20 X .37	4
8	4.37	3.87	5.25	3.50	2.85	3.81	.28 X .40	3
8A	5.25	3.87	4.37	4.37	2.85	3.81	.28 X .40	4
9	6.37	4.62	5.31	5.31	3.22	4.26	.28 X .40	4 or 5
10	6.37	4.99	5.31	5.31	3.60	4.64	.28 X .40	4 or 5
11	7.50	5.37	6.25	6.75	3.60	4.91	.27 X .55	4

Dimensional tolerance: $\pm .06$ except B and F are maximum

Mechanical Drawings



Circuit Diagrams



STANDARD & "A" OPTION

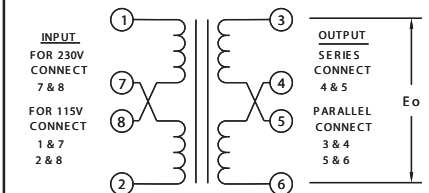
Standard and "A" Option

Input: Terminals 1 and 2

Output: Terminals 3 and 6

Series: Connect 4 and 5

Parallel: Connect 3 and 4, 5 and 6



"B" OPTION

"B" Option

Input: Terminals 1 and 2

For 230 V connect

7 and 8

For 115 V connect

1 and 7, 2 and 8

Output: (3-6)

Series: Connect 4 and 5

Parallel: Connect 3 and 4, 5 and 6



8203 Vineland Avenue
Sun Valley, CA 91352
Tel. 818-504-0644
Fax. 818-768-0395

Output Current

Output Volts (F.L.)	Parallel Connection	Series Connection	Size	Weight Lbs. Typ.	Model No.	Fig.
5 V Parallel	2.0	1.0	1	1.2	6B5-10	1
10V.C.T. Series	3.0	1.5	2	1.5	6B5-15	1
	6.0	3.0	3	2.2	6B5-30	1
	12.0	6.0	4	3.0	6B5-60	2
	18.0	9.0	5	4.3	6B5-90	2
	26.0	13.0	6	5.5	6B5-130	3
	32.0	16.0	7A	7.0	6B5-160	4
	60.0	30.0	8A	13.0	6B5-300	4
	100.0	50.0	9	23.0	6B5-500	4
6.3 V Parallel	1.6	0.8	1	1.2	6B6-10	1
12.6 V.C.T. Series	2.4	1.2	2	1.5	6B6-15	1
	4.8	2.4	3	2.2	6B6-30	1
	9.4	4.7	4	3.0	6B6-60	2
	14.4	7.2	5	4.3	6B6-90	2
	20.6	10.3	6	5.5	6B6-130	3
	25.4	12.7	7A	7.0	6B6-160	4
	48.0	24.0	8A	13.0	6B6-300	4
	95.0	47.5	9	23.0	6B6-600	4
8 V Parallel	1.2	0.6	1	1.2	6B8-10	1
16 V.C.T. Series	1.8	0.9	2	1.5	6B8-15	1
	3.6	1.8	3	2.2	6B8-30	1
	7.6	3.8	4	3.0	6B8-60	2
	11.2	5.6	5	4.3	6B8-90	2
	16.2	8.1	6	5.5	6B8-130	3
	20.0	10.0	7	7.0	6B8-160	3
	37.5	18.75	8A	13.0	6B8-300	4
	75.0	37.50	9	23.0	6B8-600	4
	100.0	50.0	10	26.0	6B8-800	4
10 V Parallel	1.0	0.5	1	1.2	6B10-10	1
20 V.C.T. Series	1.5	0.75	2	1.5	6B10-15	1
	3.0	1.5	3	2.2	6B10-30	1
	6.0	3.0	4	3.0	6B10-60	2
	9.0	4.5	5	4.3	6B10-90	2
	13.0	6.5	6	5.5	6B10-130	3
	16.0	8.0	7	7.0	6B10-160	3
	30.0	15.0	8A	13.0	6B10-300	4
	60.0	30.0	9	23.0	6B10-600	4
	85.0	42.5	10	26.0	6B10-850	4
	100.0	50.0	11	36.0	6B10-1000	4
12 V Parallel	0.82	0.41	1	1.2	6B12-10	1
24 V.C.T. Series	1.24	0.62	2	1.5	6B12-15	1
	2.50	1.25	3	2.2	6B12-30	1
	5.0	2.50	4	3.0	6B12-60	2
	7.5	3.75	5	4.3	6B12-90	2
	10.82	5.41	6	5.5	6B12-130	3
	13.32	6.66	7	7.0	6B12-160	3
	25.00	12.50	8A	13.0	6B12-300	4
	50.00	25.00	9	23.0	6B12-600	4
	71.00	35.50	10	26.0	6B12-850	4
	100.00	50.00	11	36.0	6B12-1200	4

Output Volts (F.L.)	Parallel Connection	Series Connection	Size	Weight Lbs. Typ.	Model No.	Fig.
7 V Parallel	0.58	0.29	1	1.2	6B17-10	1
34V.C.T. Series	0.88	0.44	2	1.5	6B17-15	1
	1.76	0.88	3	2.2	6B17-30	1
	3.52	1.76	4	3.0	6B17-60	2
	5.28	2.64	5	4.3	6B17-90	2
	7.64	3.82	6	5.5	6B17-130	3
	9.4	4.7	7	7.0	6B17-160	3
	17.65	8.8	8A	13.0	6B17-300	4
	35.0	17.5	9	23.0	6B17-600	4
	50.0	25.00	10	26.0	6B17-850	4
	76.5	38.25	11	36.0	6B17-1300	4
20 V Parallel	0.5	0.25	1	1.2	6B20-10	1
40 V.C.T. Series	0.74	0.37	2	1.5	6B20-15	1
	1.5	0.75	3	2.2	6B20-30	1
	3.0	1.5	4	3.0	6B20-60	2
	4.5	2.25	5	4.3	6B20-90	2
	6.5	3.25	6	5.5	6B20-130	3
	8.0	4.0	7	7.0	6B20-160	3
	15.0	7.5	8	13.0	6B20-300	3
	30.0	15.0	9	23.0	6B20-600	4
	42.5	21.25	10	26.0	6B20-850	4
	65.0	32.5	11	36.0	6B20-1300	4
28 V Parallel	0.36	0.18	1	1.2	6B28-10	1
56 V.C.T. Series	0.52	0.26	2	1.5	6B28-15	1
	1.06	0.53	3	2.2	6B28-30	1
	2.14	1.07	4	3.0	6B28-60	2
	3.20	1.6	5	4.3	6B28-90	2
	4.64	2.32	6	5.5	6B28-130	3
	5.70	2.85	7	7.0	6B28-160	3
	10.70	5.35	8	13.0	6B28-300	3
	21.43	10.71	9	23.0	6B28-600	4
	30.36	15.18	10	26.0	6B28-850	4
	46.42	23.21	11	36.0	6B28-1300	4
44 V Parallel	0.22	0.11	1	1.2	6B44-10	1
88 V.C.T. Series	0.34	0.17	2	1.5	6B44-15	1
	0.68	0.34	3	2.2	6B44-30	1
	1.36	0.68	4	3.0	6B44-60	2
	2.04	1.02	5	4.3	6B44-90	2
	2.94	1.47	6	5.5	6B44-130	3
	3.62	1.81	7	7.0	6B44-160	3
	6.82	3.41	8	13.0	6B44-300	3
	13.64	6.82	9	23.0	6B44-600	5
	19.32	9.66	10	26.0	6B44-850	5
	29.54	14.77	11	36.0	6B44-1300	4
60 V Parallel	0.16	0.08	1	1.2	6B60-10	1
120 V.C.T. Series	0.25	0.125	2	1.5	6B60-15	1
	0.50	0.25	3	2.2	6B60-30	1
	1.0	0.50	4	3.0	6B60-60	2
	1.5	0.75	5	4.3	6B60-90	2
	2.16	1.08	6	5.5	6B60-130	3
	2.66	1.33	7	7.0	6B60-160	3
	5.00	2.50	8	13.0	6B60-300	3
	10.00	5.00	9	23.0	6B60-600	5
	14.16	7.08	10	26.0	6B60-850	5
	21.67	10.83	11	36.0	6B60-1300	4



8203 Vineland Avenue
Sun Valley, CA 91352
Tel. 818-504-0644
Fax. 818-768-0395